



Creation		Revision	
date:	11-SEP-2009	date:	
by:	Ivon LeBlanc	by:	

Turbine Seal Upgrade Kit

Kit Contents

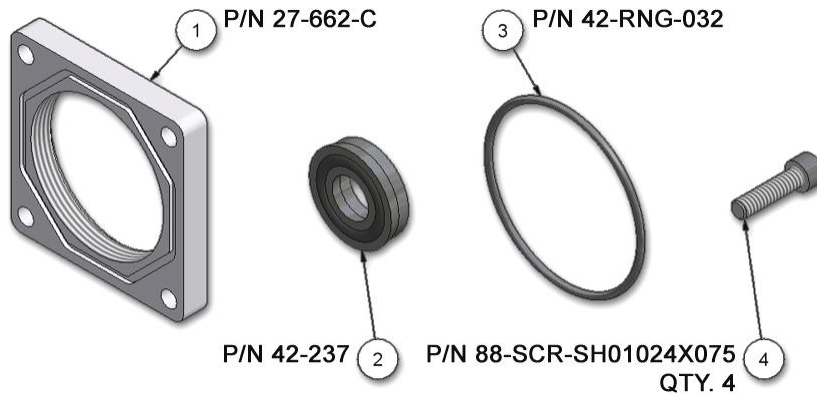


Figure 1 - Kit Contents

img-00403



ONLY perform this upgrade when the machine is shut down and is in a non-loaded condition. This means that no water is being pumped through the reel, all water pressure has been appropriately bled and all mechanical and hydraulic tension has been released from the hose rewind system.

Step 1

Remove the main body of the turbine and runner then carefully set them aside.

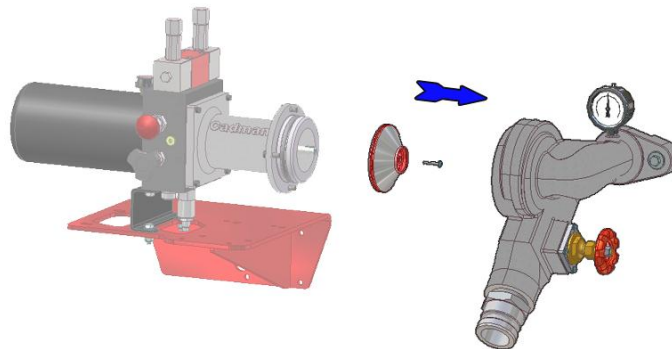


Figure 2 - Remove Turbine Body and Runner

img-00404

Step 2

Remove the existing lip seal and discard. Replace with the new seal (2) (P/N 42-237). Be sure that the seal is properly seated using a seal insertion tool. Ensure the o-ring side of the seal is facing outward towards runner.

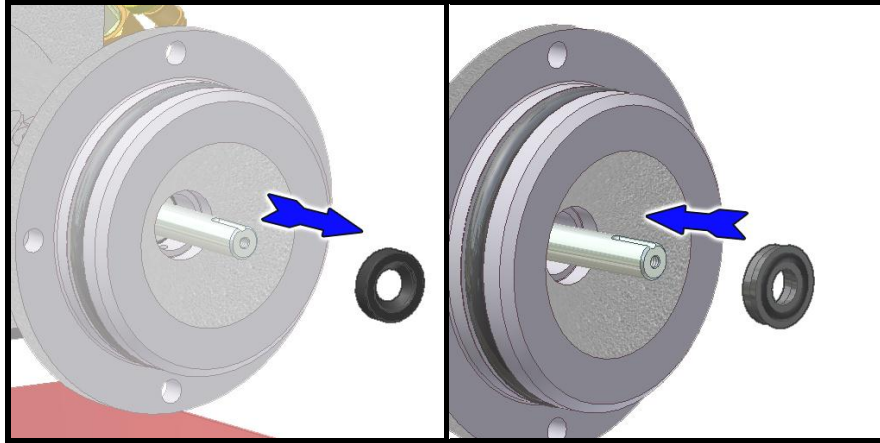


Figure 3 - Remove Old Seal and Install New Seal

img-00405 / img-00406

Step 3

Re-install the runner and turbine body to the bearing frame.

Step 4

Remove gate valve handle and mounting plate. Discard old fasteners, valve mount plate and gasket. Retain the valve and gate to use later.

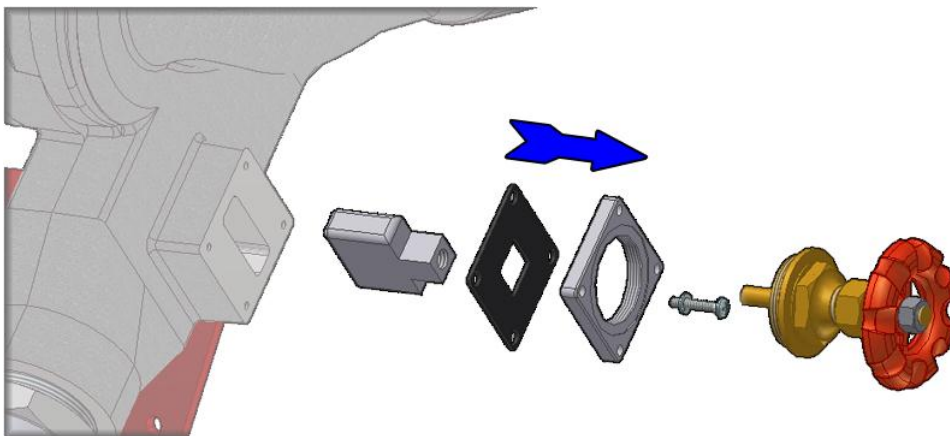


Figure 4 - Remove Valve Assembly

img-00407

Step 5

Clean the valve mount surface. Remove any residual sealant and/or gasket material. This will ensure a good seal.

Step 6

Add small dabs of silicone adhesive to the valve mount plate (1) (P/N 27-662-C) as shown in Figure 5. Form the o-ring (3) (P/N 42-RNG-036) to fit the octagonal groove. Hold the o-ring in place until it remains seated.

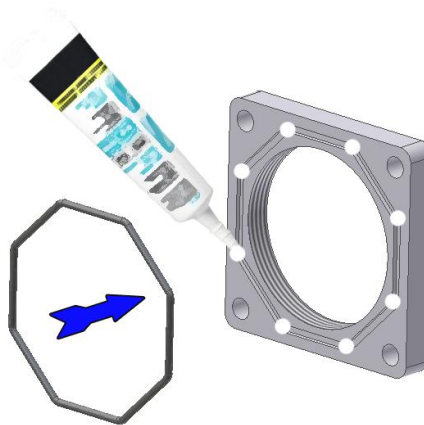


Figure 5 - Form O-ring

img-00408

Step 7

Re-assemble the valve assembly and install on the turbine housing. Use the provided fasteners (4) (P/N 88-SCR-SH01024X075 qty 4) to complete the assembly.

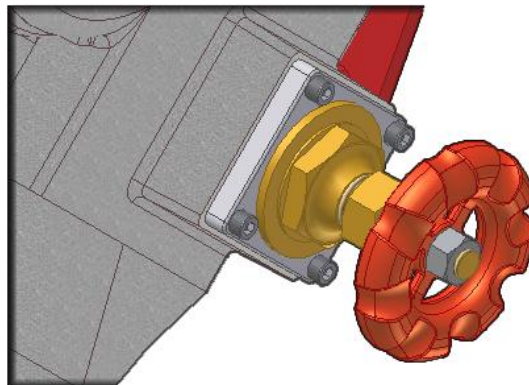


Figure 6 - Re-assemble Valve

img-00409

Congratulations you have successfully upgraded your Mini-Traveller Turbine Seals.

